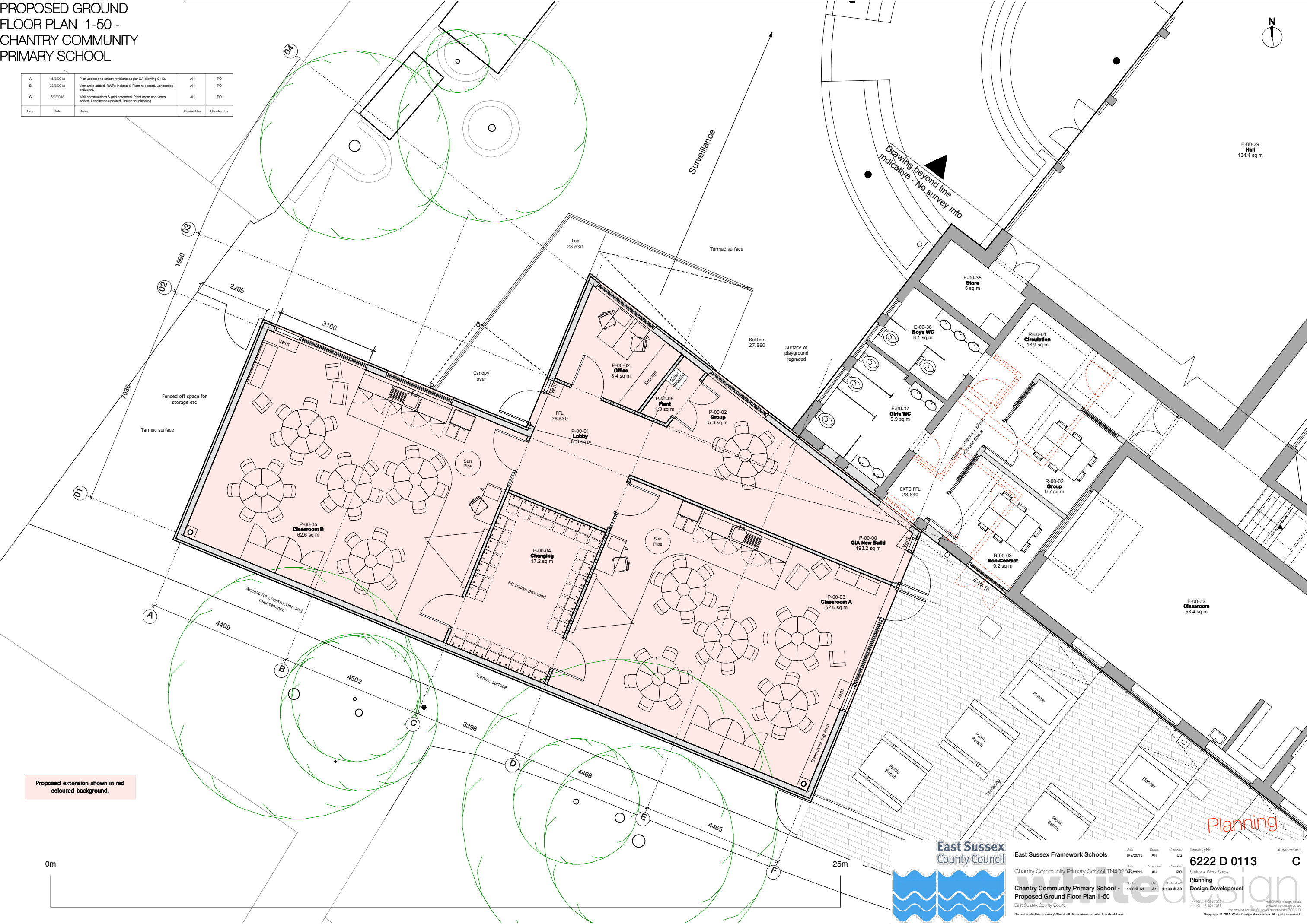


PROPOSED GROUND
FLOOR PLAN 1-50 -
CHANTRY COMMUNITY
PRIMARY SCHOOL

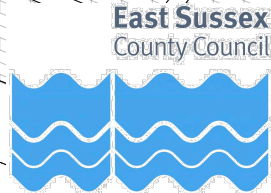
A	15/8/2013	Plan updated to reflect revisions as per GA drawing 0112.	AH	PO
B	23/8/2013	Vent units added, RWPs indicated, Plant relocated, Landscape indicated.	AH	PO
C	5/9/2013	Wall constructions & grid amended, Plant room and vents added, Landscape updated, issued for planning.	AH	PO
Rev.	Date	Notes	Revised by	Checked by



Proposed extension shown in red
coloured background.

0m

25m



East Sussex Framework Schools

Chantry Community Primary School TN402

Chantry Community Primary School -
Proposed Ground Floor Plan 1-50
East Sussex County Council

Do not scale this drawing! Check all dimensions on site. If in doubt ask.

8/7/2013
Date
1:50 @ A1

Drawn
AH

Checked
CS

Amended
AH

Checked
PO

Scale @ A3
1:100 @ A3

Drawing No
6222 D 0113

Status + Work Stage
Planning
Design Development

Amendment
C

white design

white design associates
www.white-design.co.uk
+44 (0) 117 654 7339
the growing house 502, greenwood lanes 602, 3A, 3B
Copyright © 2011 White Design Associates. All rights reserved.